

# State of Wyoming Corner Record

(In compliance with the **CORNER PERPETUATION AND FILING ACT**, Wyoming Statutes, 1997 Section 33-29-140 et. seq., and the Rules and Regulations of the Board of Professional Engineers and Professional Land Surveyors)

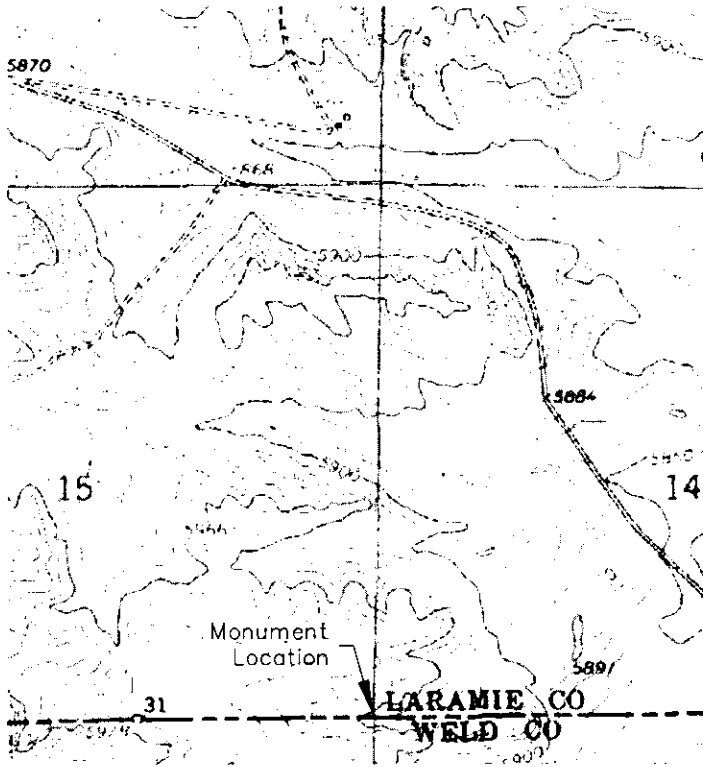
Reverse side of this form may be used if more space is needed.

Record of original survey and citation of source of historical information (if corner is lost or obliterated). Description of corner monumentation evidence found and/or monument and accessories established to perpetuate the location of this corner. Sketch of relative location of monument, accessories, and reference points with course and distance to adjacent corner(s) (if determined in this survey). Method and rationale for reestablishment of lost or obliterated corner.

**FOUND:** STONE, CLOSING CORNER TO STATE LINE (COLO. TERRITORY) SANDSTONE, WELL WEATHERED, 4 NOTCHES WEST FACE, 14X10X9, MATCHES RECORD, FIRMLY SET, LIES IN OPEN PRAIRIE

**SET:** NOTHING  
 S89°27'10"W 5357.27' TO CLOSING CORNER SEC 15/SEC 16.  
 N89°33'50"E 5237.05' TO CLOSING CORNER SEC 14/SEC 13

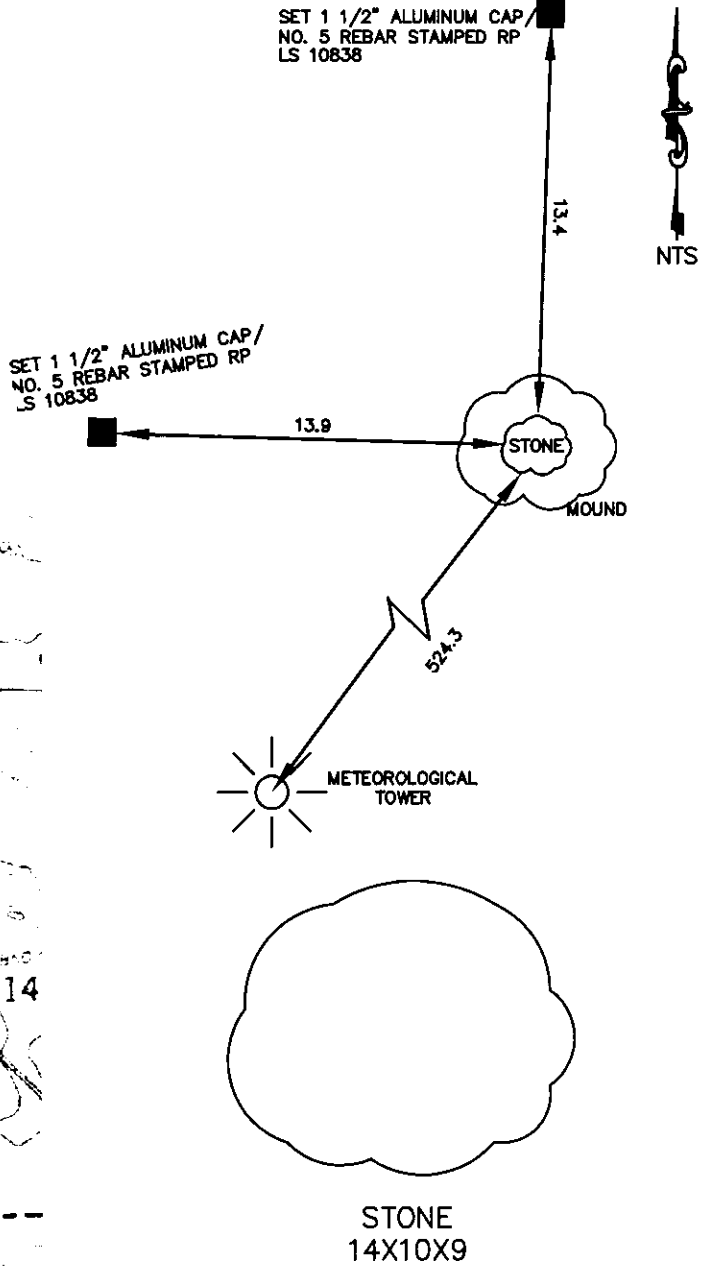
RECORDED 8/29/2008 AT 3:01 PM REC# 506832 3K# 2073 PG# 1216  
 DEBRA K. LATHROP, CLERK OF LARAMIE COUNTY, WY PAGE 1 OF 1



**Monument location**

Date of Field Work: 8/6/07

Office Reference: 2730



**Monument Inscription**

## Cross Index Plat

1	2	3	4	5	6	7	8	9	10	11	12	13	14	15	16	17	18	19	20	21	22	23	24	25	
A	+	+	+	+	+	+	+	+	+	+	+	+	+	+	+	+	+	+	+	+	+	+	+	+	
B	+	+	+	+	+	+	+	+	+	+	+	+	+	+	+	+	+	+	+	+	+	+	+	+	
C	+	6	+	+	5	+	+	+	+	4	+	+	+	3	+	+	+	+	+	2	+	+	+	1	
D	+	+	+	+	+	+	+	+	+	+	+	+	+	+	+	+	+	+	+	+	+	+	+	+	
E	+	+	+	+	+	+	+	+	+	+	+	+	+	+	+	+	+	+	+	+	+	+	+	+	
F	+	+	+	+	+	+	+	+	+	+	+	+	+	+	+	+	+	+	+	+	+	+	+	+	
G	+	7	+	+	8	+	+	+	+	9	+	+	+	10	+	+	+	+	+	11	+	+	+	12	
H	+	+	+	+	+	+	+	+	+	+	+	+	+	+	+	+	+	+	+	+	+	+	+	+	
J	+	+	+	+	+	+	+	+	+	+	+	+	+	+	+	+	+	+	+	+	+	+	+	+	
K	+	+	+	+	+	+	+	+	+	+	+	+	+	+	+	+	+	+	+	+	+	+	+	+	
L	+	18	+	+	17	+	+	+	+	16	+	+	+	15	+	+	+	+	+	14	+	+	+	13	
M	+	+	+	+	+	+	+	+	+	+	+	+	+	+	+	+	+	+	+	+	+	+	+	+	
N	+	+	+	+	+	+	+	+	+	+	+	+	+	+	+	+	+	+	+	+	+	+	+	+	
O	+	+	+	+	+	+	+	+	+	+	+	+	+	+	+	+	+	+	+	+	+	+	+	+	
P	+	19	+	+	20	+	+	+	+	21	+	+	+	22	+	+	+	+	+	23	+	+	+	24	
Q	+	+	+	+	+	+	+	+	+	+	+	+	+	+	+	+	+	+	+	+	+	+	+	+	
R	+	+	+	+	+	+	+	+	+	+	+	+	+	+	+	+	+	+	+	+	+	+	+	+	
S	+	+	+	+	+	+	+	+	+	+	+	+	+	+	+	+	+	+	+	+	+	+	+	+	
T	+	30	+	+	29	+	+	+	+	28	+	+	+	27	+	+	+	+	+	26	+	+	+	25	
U	+	+	+	+	+	+	+	+	+	+	+	+	+	+	+	+	+	+	+	+	+	+	+	+	
V	+	+	+	+	+	+	+	+	+	+	+	+	+	+	+	+	+	+	+	+	+	+	+	+	
W	+	+	+	+	+	+	+	+	+	+	+	+	+	+	+	+	+	+	+	+	+	+	+	+	
X	+	31	+	+	32	+	+	+	+	33	+	+	+	34	+	+	+	+	+	35	+	+	+	36	
Y	+	+	+	+	+	+	+	+	+	+	+	+	+	+	+	+	+	+	+	+	+	+	+	+	
Z	1	2	3	4	5	6	7	8	9	10	11	12	13	14	15	16	17	18	19	20	21	22	23	24	25

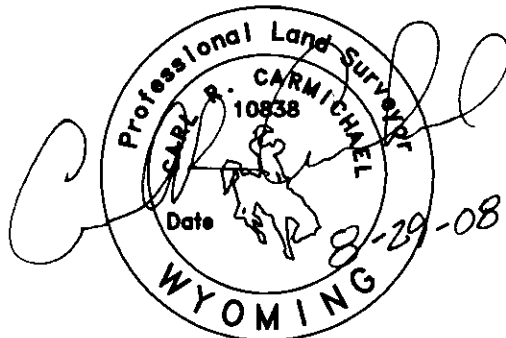
Firm/Agency, Address

This corner record was prepared by me or under my direction and supervision.

AVI P.C.  
 2035 WESTLAND RD.  
 CHEYENNE, WY. 82001

SEAL & SIGNATURE

Telephone Number: 307-637-6017



Corner Name CLOSING COR Section 15, T 12 N, R 65 W, 6th P.M. Cross-Index No.: N-17

County: Laramie Wyoming

SBRPEPLS/PLSW: March 1994; PLSW January 1998